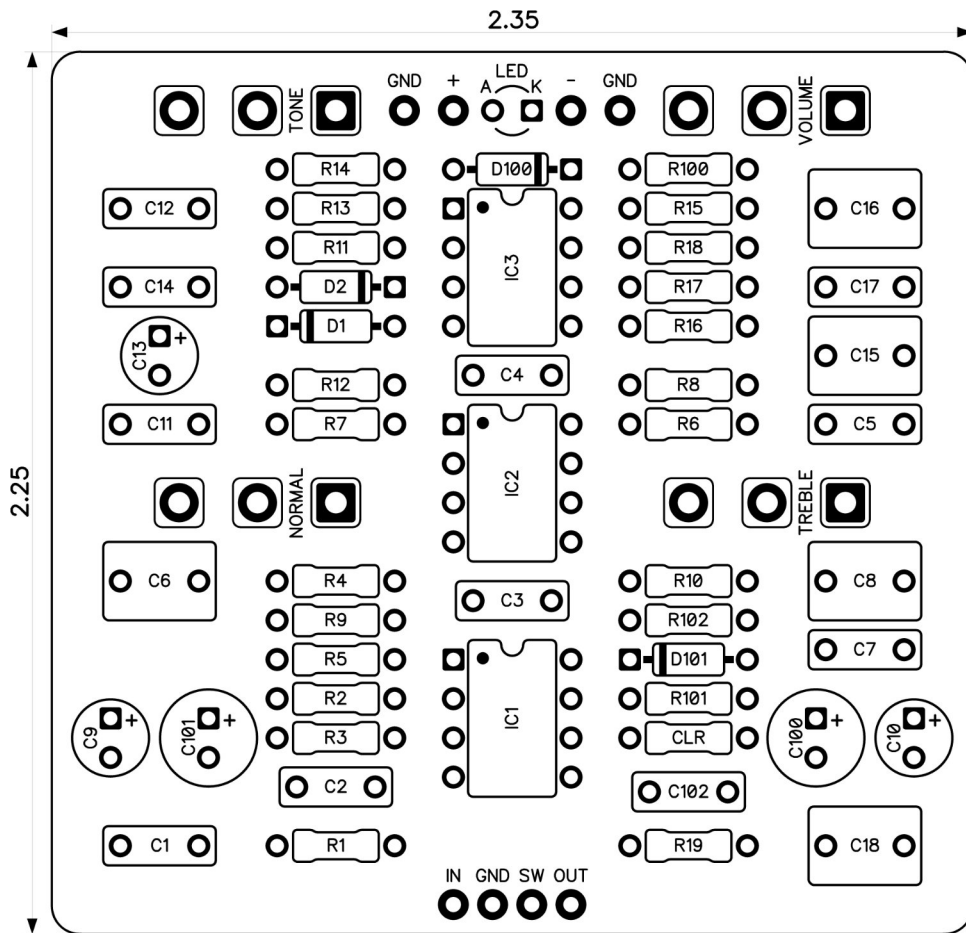


Article 59 Overdrive

Revised 12/8/25

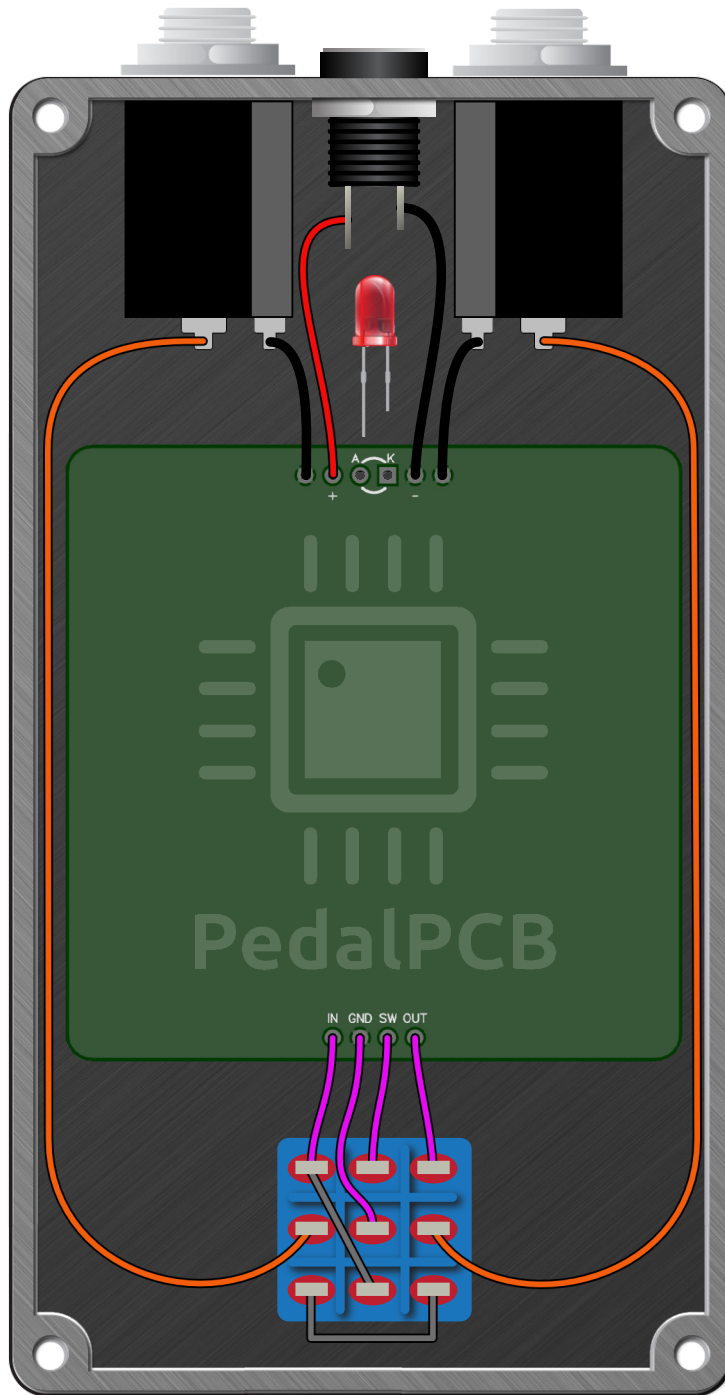


CONTROLS AND FEATURES

- Volume
- Tone
- Treble
- Normal

All trademarks and registered trademarks are the property of their respective owners. The company, product, and service names used in this web site are for identification purposes only. Use of these names, logos, and brands does not imply endorsement.

LOCATION	VALUE	TYPE	NOTES
R1	2M2	Resistor, 1/4W	
R2	2M2	Resistor, 1/4W	
R3	4K7	Resistor, 1/4W	
R4	6K8	Resistor, 1/4W	
R5	10K	Resistor, 1/4W	
R6	2K2	Resistor, 1/4W	
R7	5K6	Resistor, 1/4W	
R8	5K6	Resistor, 1/4W	
R9	3K3	Resistor, 1/4W	
R10	3K3	Resistor, 1/4W	
R11	4K7	Resistor, 1/4W	
R12	4K7	Resistor, 1/4W	
R13	470K	Resistor, 1/4W	
R14	1K	Resistor, 1/4W	
R15	10K	Resistor, 1/4W	
R16	470K	Resistor, 1/4W	
R17	22K	Resistor, 1/4W	
R18	1K	Resistor, 1/4W	
R19	470K	Resistor, 1/4W	
R100	22R	Resistor, 1/4W	
R101	10K	Resistor, 1/4W	
R102	10K	Resistor, 1/4W	
CLR	4K7	Resistor, 1/4W	* LED current limiting resistor
C1	22n	Film capacitor, 7.2 x 2.5mm	
C2	1n	Film capacitor, 7.2 x 2.5mm	
C3	22n	Film capacitor, 7.2 x 2.5mm	
C4	100p	Ceramic capacitor	
C5	100p	Ceramic capacitor	
C6	330n	Film capacitor, 7.2 x 5mm	
C7	100n	Film capacitor, 7.2 x 2.5mm	
C8	470n	Film capacitor, 7.2 x 5mm	
C9	1u	Electrolytic capacitor, 5mm	
C10	1u	Electrolytic capacitor, 5mm	
C11	4n7	Film capacitor, 7.2 x 2.5mm	
C12	100p	Ceramic capacitor	
C13	1u	Electrolytic capacitor, 5mm	
C14	100n	Film capacitor, 7.2 x 2.5mm	
C15	470n	Film capacitor, 7.2 x 5mm	
C16	1u	Film capacitor, 7.2 x 5mm	
C17	100p	Ceramic capacitor	
C18	470n	Film capacitor, 7.2 x 5mm	
C100	100u	Electrolytic capacitor, 5mm	
C101	100u	Electrolytic capacitor, 5mm	
C102	100n	Film capacitor, 7.2 x 2.5mm	
D1	1N4148	Signal diode, DO-35	
D2	1N4148	Signal diode, DO-35	
D100	1N5817	Schottky diode, DO-41	
D101	1N4148	Signal diode, DO-35	
IC1	TL072	Dual op-amp, DIP8	Link
IC2	MC33178	Dual op-amp, DIP8	Link
IC3	MC33178	Dual op-amp, DIP8	Link
VOLUME	A100K	16mm right-angle PCB mount pot	
TONE	B10K	16mm right-angle PCB mount pot	
TREBLE	A10K	16mm right-angle PCB mount pot	
NORMAL	B10K	16mm right-angle PCB mount pot	



Article 59 Overdrive

Drill Template
125B Enclosure

